

visualcam fikus for wire EDM

fikus visualcam for wire EDM offers a flexible and complete solution for today's wire EDM programmer. The solution is specifically designed to produce 2 and 4-axis toolpaths easily and quickly, using a wide range of innovative software tools. Machine technologies from manufacturers like Accutex, ActSpark, AgieCharmilles, ARD, Chmer, Fanuc, Hitachi, Joemars, Makino, Mitsubishi, Ona and Sodick are implemented with optimized technological tables.

Key Features

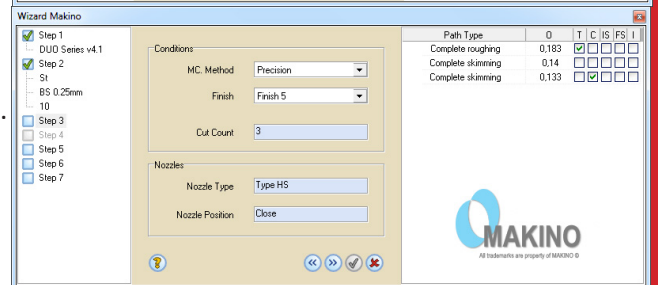
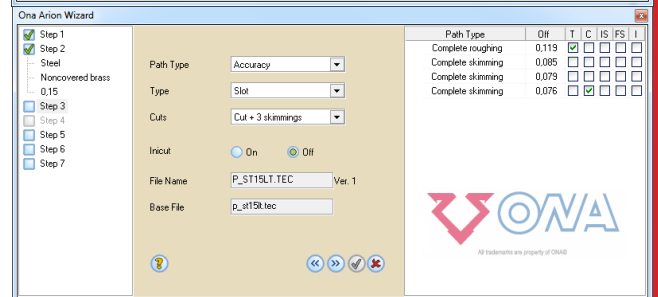
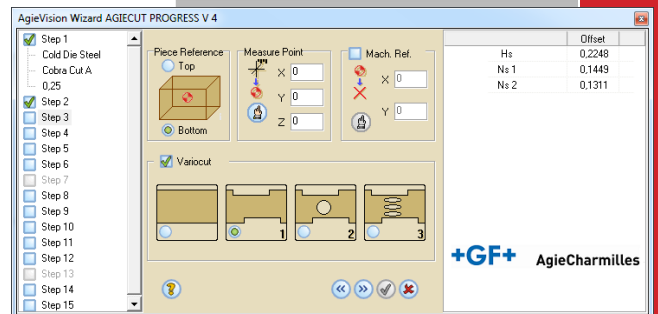
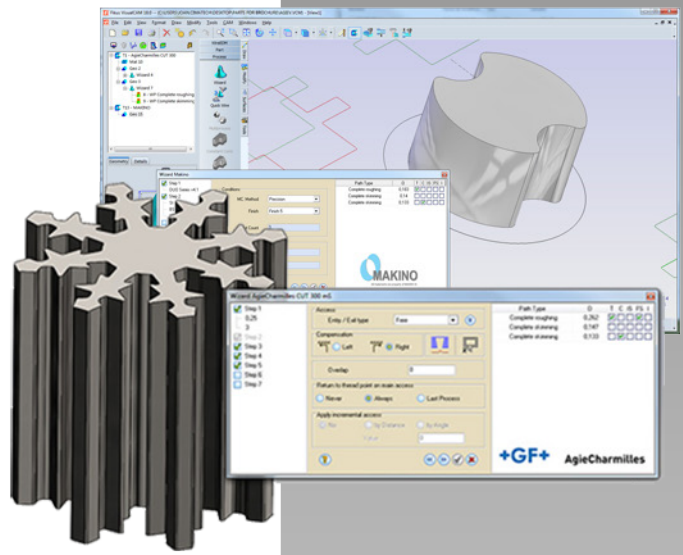
- Reduce time-to-market and work hours drastically.
- Shorten geometry construction and part definition efforts.
- Program any machine from your PC using the specific Wizards and technological databases.
- Let **fikus** visualcam Wire EDM Manager guide you easily and efficiently, through the whole and logical EDM process.
- Empowered with the most advanced wire path calculation algorithms.
- **fikus** visualcam offers the first commercial solution for 4X no-core-cuts.
- Automatic Feature Recognition for higher automation level.
- Visualization of stock simulation increases control over tool paths.

Easy to use. The CAM manager leads the user through the logical sequential process of the wireEDM programming, from defining the geometry and creating the part to cut, to the process definition and calculation.

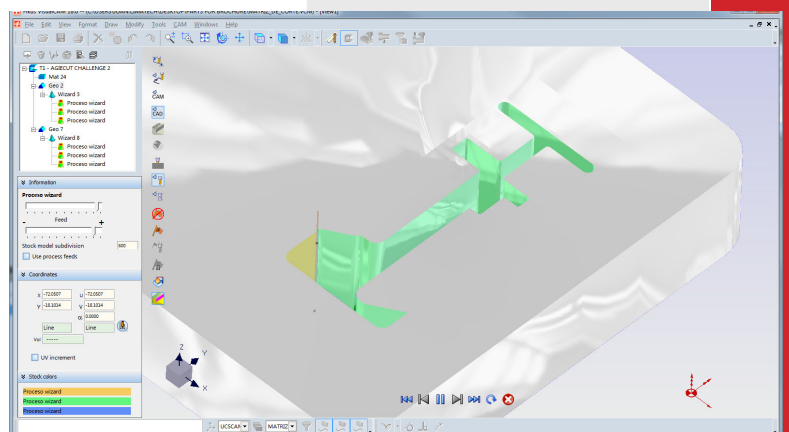
Create and modify your geometry. Whether you have to build your geometry from a drawing or you import it from another CAD system, **fikus** visualcam offers powerful functions that will ease your workload:

- Generate and modify any wireframe geometry.
- Extract contours and work with surfaces.
- Create gears, rack gears, texts and dimensions.
- Use the 'fastedit' functions to quickly move, copy, scale and modify the geometry.

Technology Wizards. Use the dedicated Wizard, available for any machine, to generate your programs. Just select your base geometry and click on the Wizard icon then set your machine parameters and the targeted quality; the wizard will complete the rest in just a few seconds.



Specific Wizards for most of machines



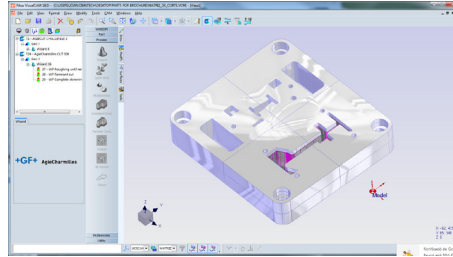
Stock simulation

fikus visualcam incorporates databases for all wireEDM common machines and you can rely on it to generate the machine optimal cutting strategy for your specific machine and work.

The Collar Wizard helps you to generate all the cuts for collar dies according to the machine technology and your requirements.

Build your part. You can handle 2X parts with constant draft angle, advanced 2X with multiple draft angles, and 4X parts.

fikus visualcam 's Automatic Feature Recognition lets you select all the features to cut automatically. But you can also build the part to cut by selecting single or combined 2D/3D contours and use the Construction or Synchronization tools. If you selected surfaces, you don't have to care about synchronizations.



Wirepath manager

If you need to modify the corners or generating a partial clearance, **fikus visualcam** can also do it!

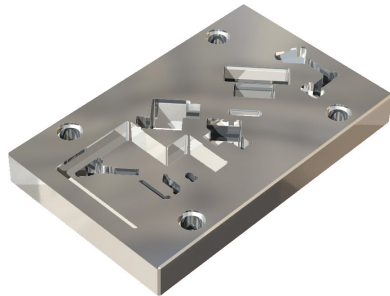
Technological points. Use the **Techpoints** function to set a point to clamp the part or change the machine conditions during the cut.

Procedures. When you are ready for cutting you can choose from different cutting procedures: 2X cut, 4X cut or no-core-cut. Copy and paste your procedures to apply more cuts. Reorder your procedures by just "drag and drop" or even by type of cut.

Templates. If you have a well-defined and proven cutting strategy you can save time by saving it as a **Multiprocess** and use it thereafter with other similar parts.

Wizards. The use of wizards eases your workflow, by generating the procedures and a strategy for you. Run the Wizard for your machine, set the parameters (wire type, diameter, material, ...) and your quality target and it will generate the cutting sequence according to the machine database.

Calculate and Simulate. The wire path simulator will show the part and the stock as a solid and also the current coordinate and taper angle. The new stock simulator allows reviewing the way the stock is cut by the wire and detecting the cases where a scrap is produced or the stock is divided.



Postprocess and verify. Generate your machine program using Fikus Visualcam ready to use postprocessors. Verify the program with **Ficed**, the integrated G-Code editor, and send it directly to the machine.

Report. Generate the documentation needed for the shop floor, including information as the wire threading point list and the cutting order.

Technology Wizards

fikus supports technologic tables for the following machine brands:

- Accutex
- Agie
- ARD
- Chmer
- Hitachi
- Makino
- Ona
- ActSpark
- AgieCharmilles
- Charmilles
- Fanuc
- Joemars
- Mitsubishi
- Sodick

Data Interfaces

fikus can read data from other CAD systems in the following formats:

- IGES
- DWG
- DXF
- STEP
- HPGL
- Solidworks
- Parasolid
- Cimatron E
- ISO formats
- Bitmap files

Minimum system requirements

- PC Computer with processor Intel Core 2 Duo 2GHz or higher (i7 recommended)
- RAM Memory: 2GB or bigger
- Graphic Card with OpenGL (NVIDIA recommended)
- Operating System: Microsoft Windows XP, Vista, 7 or 8 (32 and 64 bit)
- CD/DVD unit
- Hard Disk: 1GB free
- 3 buttons mouse

Languages supported

fikus is supported in the following languages: Chinese, English, French, German, Italian, Polish, Portuguese, Russian, Spanish and Turkish.

Modules and Versions

fikus visualcam for WireEDM comes in two different configurations: 2X or 4X.

FCgeo is a **fikus** version integrated onboard the Vision and AgieVision CNCs.

fikus fast.wire is a special version bundled with AgieCharmilles FW machines.

FCcam.easy is a **fikus** version integrated onboard AgieCharmilles CUT x0P, CUT x00 mS/Sp, CUT Exx0 series machines.

FCcam.drill is a solution developed for the hole drilling EDM machines.

Metalcam S.L. (Spain)

Barcelona: C/ Berruguete, 90 T: 932 74 90 40
Burgos: C/ Caja de Ahorros Municipal, 1, 4º E T: 947 26 35 72

Metalcam Technologies Pvt. Ltd. (India) 1st Floor, No.01, 80 Feet Road, Opp. George Thangaiyah Complex, Indira Nagar, Bangalore, Karnataka 560038 India T: +91 80 4095 5866

Metalcam China (China) Beijing: 6, Xinyuannan Rd. Chaoyan Dist. T: +86 10 84865223

e-mail: info@metalcam.com

